

Blue Ridge Conservancy
P.O. Box 568
Boone NC 28607

Non-Profit Org.
U.S. Postage
PAID
West Jefferson, NC
Permit No. 3



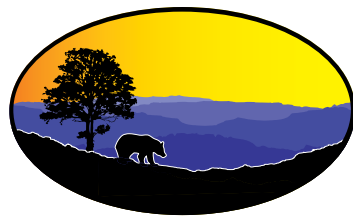
**BLUE RIDGE
CONSERVANCY**
SAVING THE PLACES YOU LOVE

Saving Land in the Blue Ridge

Our Partners

We can only accomplish our important work through coalitions and partnerships. Blue Ridge Conservancy thanks the following partners for their help in protecting the land and water resources of the Blue Ridge.

- | | |
|---|---|
| <i>Our many generous private donors</i> | <i>The Nature Conservancy</i> |
| <i>Blue Ridge Forever coalition and local land trust partners</i> | <i>Department of Agriculture Plant Conservation Program</i> |
| <i>Blue Ridge Parkway Foundation</i> | <i>North Carolina Clean Water Management Trust Fund</i> |
| <i>The Conservation Fund</i> | <i>North Carolina Natural Heritage Trust Fund</i> |
| <i>Conservation Trust for North Carolina</i> | <i>North Carolina Parks and Recreation Trust Fund</i> |
| <i>Land Trust Alliance</i> | <i>North Carolina Agricultural Development and Farmland Preservation Trust Fund</i> |
| <i>Foundation for the Carolinas</i> | <i>North Carolina Wildlife Resources Commission</i> |
| <i>Helen M. Clabough Charitable Foundation</i> | <i>North Carolina State Parks</i> |
| <i>Park Foundation</i> | <i>North Carolina Department of Transportation</i> |
| <i>Z. Smith Reynolds Foundation</i> | |



**BLUE RIDGE
CONSERVANCY**
SAVING THE PLACES YOU LOVE

A private, non-profit, non-governmental organization serving Alleghany, Ashe, Avery, Mitchell, Watauga, Wilkes and Yancey Counties.
www.blueridgeconservancy.org

Photo courtesy Eric Heistand / ericheistand.com



In 2010 two of northwestern North Carolina's prominent land trusts joined forces to create Blue Ridge Conservancy (BRC). With the merger of Blue Ridge Rural Land Trust and High Country Conservancy, a new nonprofit land conservancy was established with the mission of *protecting the natural resources of northwestern North Carolina by conserving land with significant agricultural, ecological, cultural, recreational or scenic value*. To date, BRC has protected over 15,000 acres in 153 places.



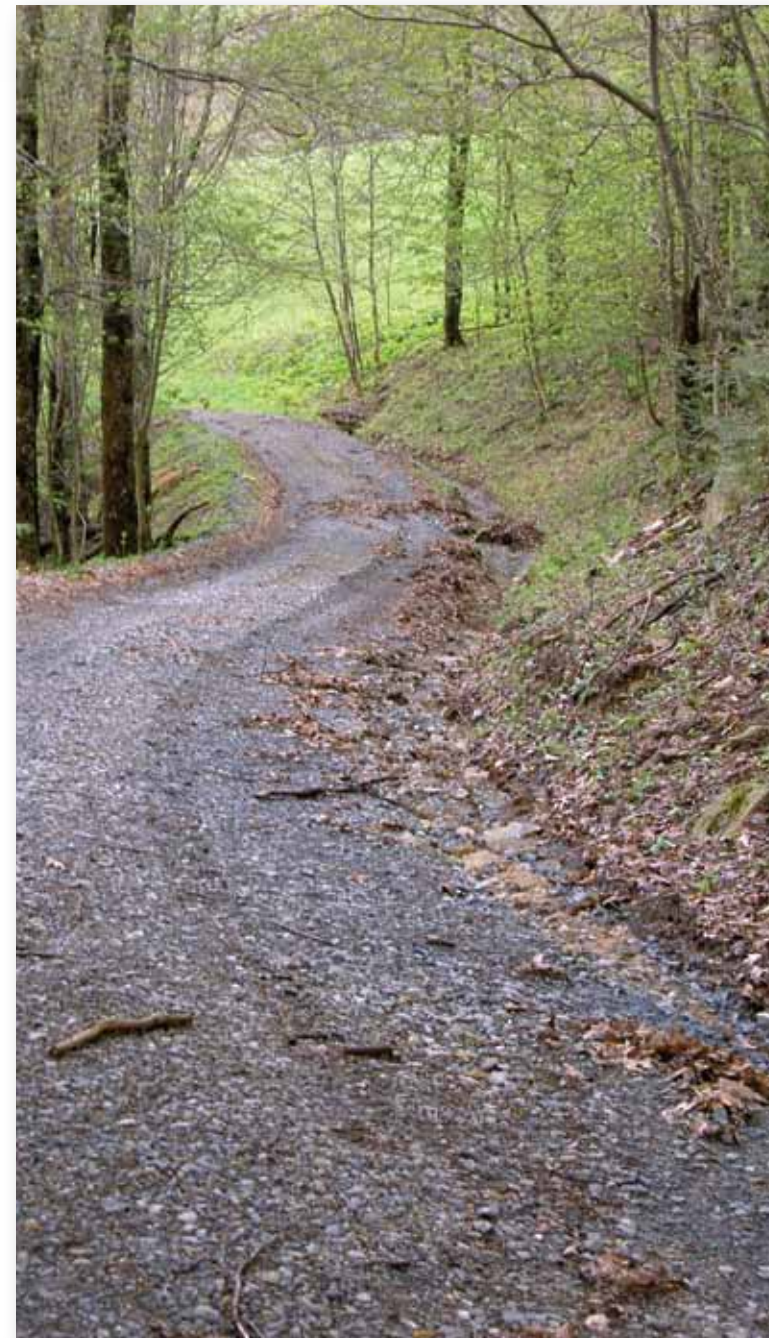
**BLUE RIDGE
CONSERVANCY**
SAVING THE PLACES YOU LOVE

Blue Ridge Conservancy is a private, non-profit, non-governmental organization incorporated in North Carolina and serving Alleghany, Ashe, Avery, Mitchell, Watauga, Wilkes and Yancey Counties. We are dedicated to protecting important conservation land as efficiently as possible. For example, our merger resulted in an annual administrative savings of \$100,000. That means more money for protecting the places we all love.

The following pages contain a portfolio of our many successful conservation projects, divided as they relate to BRC's overall mission. You will see examples of our many protected farms, state parks, natural areas, culturally significant properties, and properties that have been protected specifically for their scenic value.

And as you look at what BRC has accomplished please remember that protecting our land begins with you, our donors and supporters. Blue Ridge Conservancy is your "local" land trust. Our staff and Board of Trustees are your neighbors and we live and work in the areas we protect. That makes a world of difference!

So come by for a visit. Our office is located at:
166 Furman Road, Suite C, Boone, NC 28607
PO Box 568, Boone, NC 28607
(828) 264-2511
blueridgeconservancy.org



Protecting Farms and Agriculture



Blackburn-Vannoy Farm

Ashe County, 369 Acres

Permanently protected by a BRC conservation easement, this historic farm includes forests, pasture, and two farm houses built in the 1880s. The property will host the new location of Appalachian State University's Sustainable Development Program's teaching and research farm. This will create an exciting opportunity for BRC to work closely with ASU to help draw the connection between land conservation, education, local food and agriculture.

Mountain Farm

Yancey County, 24 acres

A thriving agri-tourism destination, this small family farm is renowned across the state for successfully growing lavender, an ingredient used for everything from soap to seasonings in Asheville's restaurant kitchens. In addition to lavender, Mountain Farm offers pick-your-own blueberries, a goat dairy, gift shop and farm tours. BRC's conservation easement on the property conserves valuable farmland and helps protect the water quality of the South Toe River.



Huber Family Farm

Alleghany County, 165 acres

Often referred to as "The Little Farm," the Huber Family Farm is a model for agricultural conservation and restoration activities. With support from the National Resources Conservation Service, the farm's owner is leading the way in restoring the banks of Brush Creek and Little Pine Creek. Also, by instituting agricultural Best Management Practices such as fencing cattle and horses from the streams and installing livestock watering wells, the farm's owner is protecting water quality for future generations.



Robinson Family Farm

Ashe County, 55 acres

BRC's conservation of this historic family farm protects valuable farmland, streams and a biologically significant wetland seep. Protection of the farm was made possible with help from the Agricultural Development and Farmland Preservation Trust Fund and the Helen M. Clabough Foundation. The property is currently used for growing hay and grazing cattle.

Long Ridge Farms

Watauga County, 130 acres

This family-owned Christmas tree farm is situated above the Watauga River near historic Valle Crucis. BRC's conservation easement protects a thriving farm, along with excellent plant and wildlife habitat.

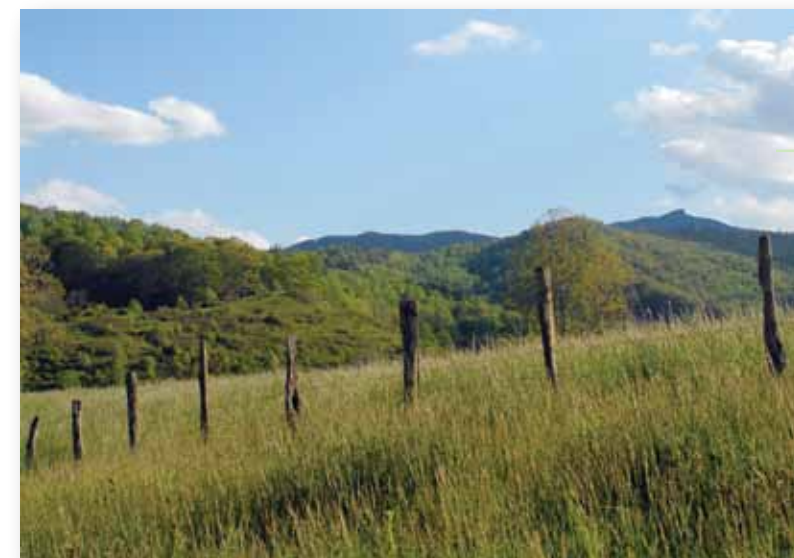


Protecting Ecology and Habitat

Beech Creek Bog State Natural Area

Watauga County, 120 acres

BRC led the way in protecting this Significant Natural Heritage Area. Created in 2002, the bog represents the first example of a southern Appalachian bog in the N.C. State Parks system. Unlike northern bogs of glacial origin, southern Appalachian bogs form in poorly drained depressions or on gentle slopes. Beech Creek Bog is noteworthy because both the bog and the surrounding watershed show very little disturbance and contain natural communities of excellent quality. Sitting at an elevation of 4,000 feet, this nationally significant natural area supports a large population of the rare bog clubmoss as well as other unusual species.



Bear Paw State Natural Area

Watauga County, 355 acres

BRC led the land acquisition effort and partnered with the State of N.C. to create the new Bear Paw State Natural Area. Managed by State Parks, Bear Paw is located on Hanging Rock Ridge, a Significant Natural Heritage Area. Important natural communities with rare and threatened plant species are located within this nationally significant area.

Pond Mountain

Ashe County, 1,793 acres

Named by Thomas Jefferson's father while surveying the Virginia-North Carolina border, Pond Mountain received its name from the unusual natural ponds that dotted its high ridge. BRC led the way in protecting this ecologically and culturally significant area perched at an elevation of 5,000 feet. Currently under Christmas tree cultivation, the project offers major environmental benefits by presenting an opportunity to restore a high mountain habitat to a thriving natural area. Pond Mountain also connects with the Cherokee National Forest which adds to a large contiguous area important for wildlife habitat. Finally, the property contains the headwaters for Big Laurel Creek, Big Horse Creek and Little Horse Creek, enhancing and protecting local and regional water quality. Beyond ecological benefits, the area will offer passive recreational opportunities such as horseback riding and hiking.



Moses Cone Old Growth Forest

Watauga County, 60 acres

Part of a Significant Natural Heritage Area, this tract adjoins the Blue Ridge Parkway's Moses Cone Memorial Park. Through two land conservation projects, BRC has protected old-growth forest, wildlife habitat and headwater tributaries for the New River. In 2008, BRC donated a 21-acre portion of these protected lands to the Blue Ridge Parkway.



High Haven

Avery County, 100 acres

Through a donated conservation easement, this BRC project protects a globally imperiled Southern Appalachian bog containing rare plant and animal species. The project also protects the water quality of the North Toe River, a water supply for the mountain community of Spruce Pine.



Land Protection Projects 1997 - 2010



0 5 10 Miles

Prepared by Blue Ridge Conservancy 2010

1 Alleghany Farm - 2000	163 Acres	26 Ashe Farm - 2001	125 Acres	51 Banner Valley - 2 - 2007	70 Acres	76 VCCC Open Fields CE - 2004	73 Acres	101 Watauga CE - 2009	11 Acres
2 Bullhead Mountain State Natural Area	220 Acres	27 The Reserve - 2001	90 Acres	52 Banner Valley - 3 - 2008	11 Acres	77 Watauga Farm - 2004	22 Acres	102 Wilkes Farm - 2001	183 Acres
3 Alleghany Farm - 2001	290 Acres	28 Blackburn Homeplace Farm - 2002	156 Acres	53 Banner Valley - 4 - 2009	56 Acres	78 Watauga Farm - 2004	50 Acres	103 Wilkes Farm - 2002	1145 Acres
4 Alleghany Farm - 2002	280 Acres	29 Calloway Gap Farm - 2002	50 Acres	54 Wellspring Farm - 2008	95 Acres	79 Watauga Farm - 2004	37 Acres	104 Wilkes Farm - 2004	6 Acres
5 Blue Ridge Parkway - 2002	51 Acres	30 Rosalie Massengale Natural Area - 2002	30 Acres	55 Dutch Creek - 1998	13 Acres	80 Watauga Farm - 2004	63 Acres	105 Wilkes Farm - 2005	160 Acres
6 Black Family Farm - 2004	222 Acres	31 Vannoy Farm - 2002	189 Acres	56 Sims Creek - 1998	2 Acres	81 Watauga Farm - 2004	107 Acres	106 Wilkes CE - 2007	24 Acres
7 Blue Ridge Parkway - 2004	52 Acres	32 Ashe Farm - 2003	30 Acres	57 Junaluska Natural Area - 1999	12 Acres	82 Jake's Mountain - 2005	45 Acres	107 Wilkes Farm - 2007	152 Acres
8 Blue Ridge Parkway - 2006	80 Acres	33 Tate Farm - 2003	652 Acres	58 Raven Rocks Farm - 1999	12 Acres	83 Middle Fork Greenway	4 Acres	108 Foothills Heritage Farm - 2008	24 Acres
9 Alleghany Farm - 2005	165 Acres	34 Ashe Farm - 2004	81 Acres	59 Ridge View - 1999	6 Acres	84 Tester Mountain - 2005	6 Acres	109 Whippoorwill Academy - 2008	317 Acres
10 Alleghany CE - 2006	25 Acres	35 Horseshoe Farm - 2005	190 Acres	60 Snyder Place - 2000	2 Acres	85 Blue Ridge Parkway - 2006	2 Acres	110 Wilkes Farm - 2008	230 Acres
11 Alleghany Farm - 2007	111 Acres	36 Old Orchard Creek Farm - 2006	62 Acres	61 Walnut Cove Farm - 2000	49 Acres	86 Faith Bridge - 2006	10 Acres	111 Wilkes Farm - 2008	94 Acres
12 Black Family CE - 2007	51 Acres	37 Ashe CE - 2007	33 Acres	62 YMCA - Herring Ridge CE - 2008	32 Acres	87 Middle Fork Greenway	6 Acres	112 Wilkes Farm - 2008	67 Acres
13 Blue Ridge Parkway - 2007	232 Acres	38 Ashe CE - 2007	120 Acres	63 Long Ridge Farms - 2001	130 Acres	88 Middle Fork Greenway	6 Acres	113 Wilkes Farm - 2008	42 Acres
14 Old Fields Farm - 2007	278 Acres	39 Ashe Farm - 2007	116 Acres	64 Sleepy Hollow Natural Area - 2001	2 Acres	89 Mission Ridge - 2006	32 Acres	114 Yarnall Knob CE - 2008	710 Acres
15 Old Truitt Farm - 2007	71 Acres	40 Ashe Farm - 2008	97 Acres	65 Cone Old Growth I - 2002	21 Acres	90 Watauga CE - 2006	70 Acres	115 Wilkes Farm - 2009	100 Acres
16 Alleghany Farm - 2008	106 Acres	41 Bridal Cove CE - 2008	44 Acres	66 Cone Old Growth II - 2009	39 Acres	91 Watauga Farm - 2006	30 Acres	116 Lili Krause Wildlife Sanctuary - 2003	2 Acres
17 Black Family CE - 2008	52 Acres	42 Bridal Cove Natural Area - 2008	64 Acres	67 Pressly Farm - 2002	19 Acres	92 Watauga Farm - 2006	28 Acres	117 Yancey Farm - 2004	137 Acres
18 Black Family CE - 2008	85 Acres	43 Robinson Family Farm - 2008	57 Acres	68 Taylor Family Farm - 2002	65 Acres	93 Reynolds Blue Ridge - 2007	616 Acres	118 Yancey Farm - 2005	61 Acres
19 Black Family CE - 2008	56 Acres	44 Pond Mountain Game Lands	1950 Acres	69 Beech Creek Bog	140 Acres	94 Valle Crucis Park CE - 2007	4 Acres	119 Yancey CE - 2006	18 Acres
20 Black Family CE - 2008	91 Acres	45 Three Top Mountain Game Lands	104 Acres	70 Snake Den Ridge - 2003	25 Acres	95 Watauga River Farm - 2007	108 Acres	120 Yancey CE - 2007	19 Acres
21 Blue Ridge Parkway - 2008	215 Acres	46 Spanish Oak Farm - 2004	90 Acres	71 Atkins Family CE - 2004	25 Acres	96 Bear Paw State Natural Area	355 Acres	121 Yancey CE - 2007	20 Acres
22 Blue Ridge Parkway - 2008	57 Acres	47 Sugar Mountain Natural Area - 2004	14 Acres	72 Craborchard Creek - 2004	33 Acres	97 Bonbern CE - 2008	42 Acres	122 Yancey CE - 2007	5 Acres
23 Stony Knob Farm - 2008	256 Acres	48 Old Farm - 2005	43 Acres	73 Howard Knob - 2004	46 Acres	98 Oliver Hill - 2008	97 Acres	123 Yancey CE - 2007	20 Acres
24 Alleghany Farm - 2009	92 Acres	49 High Haven - 2006	100 Acres	74 Valle Crucis Farm - 2004	22 Acres	99 Tater Hill Bog - 2008	196 Acres	124 Yancey CE - 2007	53 Acres
25 Alleghany Farm - 2009	121 Acres	50 Banner Valley - 1 - 2007	51 Acres	75 VCCC Craborchard Creek CE - 2004	199 Acres	100 Elk Knob State Park	665 Acres	125 Yancey Farm - 2007	118 Acres
								126 Mountain Farm - 2008	24 Acres

Protecting Cultural Heritage

Whippoorwill Academy

Wilkes County, 317 acres

Home of the historic Whippoorwill Village and Academy, this beautiful 331-acre farm has been in the same family for over 200 years. Rich with culture and history, the property contains a portion of the Overmountain Victory National Historic Trail, as well as 1.5 miles of frontage on both the Yadkin River and the Upper Yadkin Way Scenic Byway. The farm hosts a variety of historical attractions including a farmhouse built in 1877, a collection of late 19th century buildings open to the public as Whippoorwill Academy and the Tom Dooley Museum. The farm also hosts the annual Daniel Boone Day. BRC led the protection of the Whippoorwill Village and the historic farm under a grant from the N.C. Scenic Byways Lands Conservation Initiative, and in partnership with the Federal Highway Administration and the Conservation Trust for N.C.



Old Orchard Creek Farm

Ashe County, 87 acres

Old Orchard Creek is a historic, artisanal Appalachian blueberry and apple farm. This beautiful cove farm is on the National Register of Historic Places and is protected by a conservation easement donated to BRC. The farm is home to a restored 1880s farmhouse and numerous historic farm buildings. Old Orchard Creek was protected in partnership with the Clean Water Management Trust Fund and is a model for agricultural Best Management Practices. In 2010, the farm received an award from Preservation North Carolina for landscape protection.



Valle Crucis

Watauga County, 1,057 acres

From the Mast General Store to the Valle Country Fair, Valle Crucis is an area rich with history and culture—so rich that North Carolina deemed the entire community the state's first "Rural Historic District." The area contains multi-generational family farms and National Register of Historic Places' sites like the Valle Crucis Episcopal Mission, Mast Store and Mast Farm Inn. It's also an area rich in biological diversity, with four places of significant natural heritage, including Bear Paw State Natural Area. Protecting the natural and cultural heritage of Valle Crucis remains a top priority for BRC.

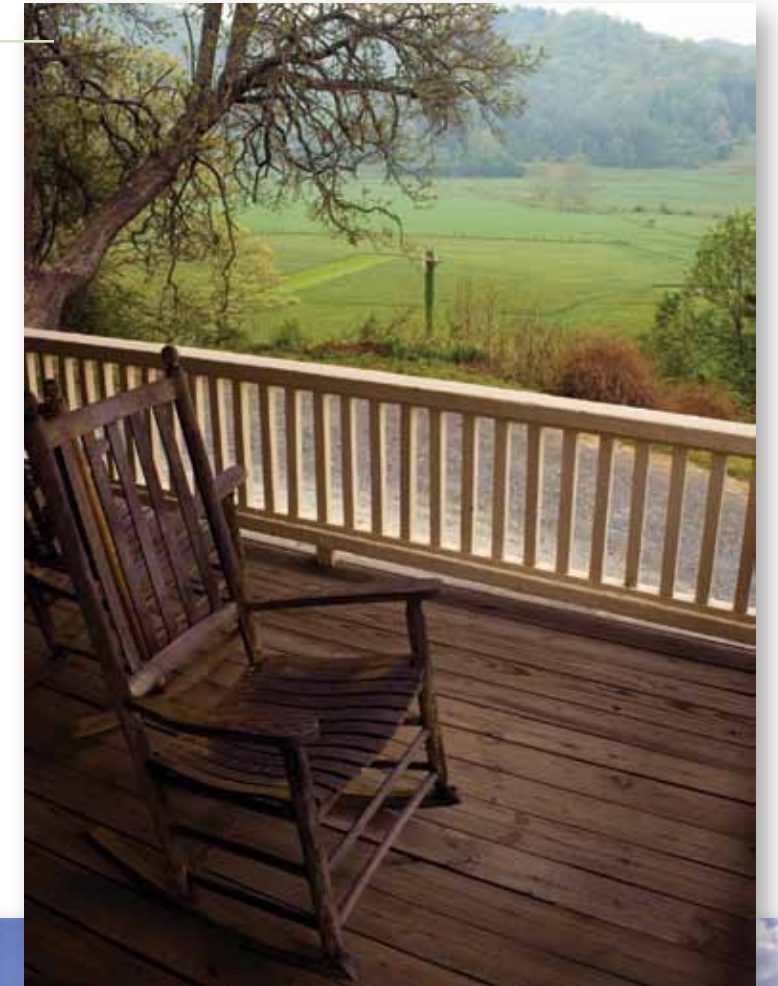
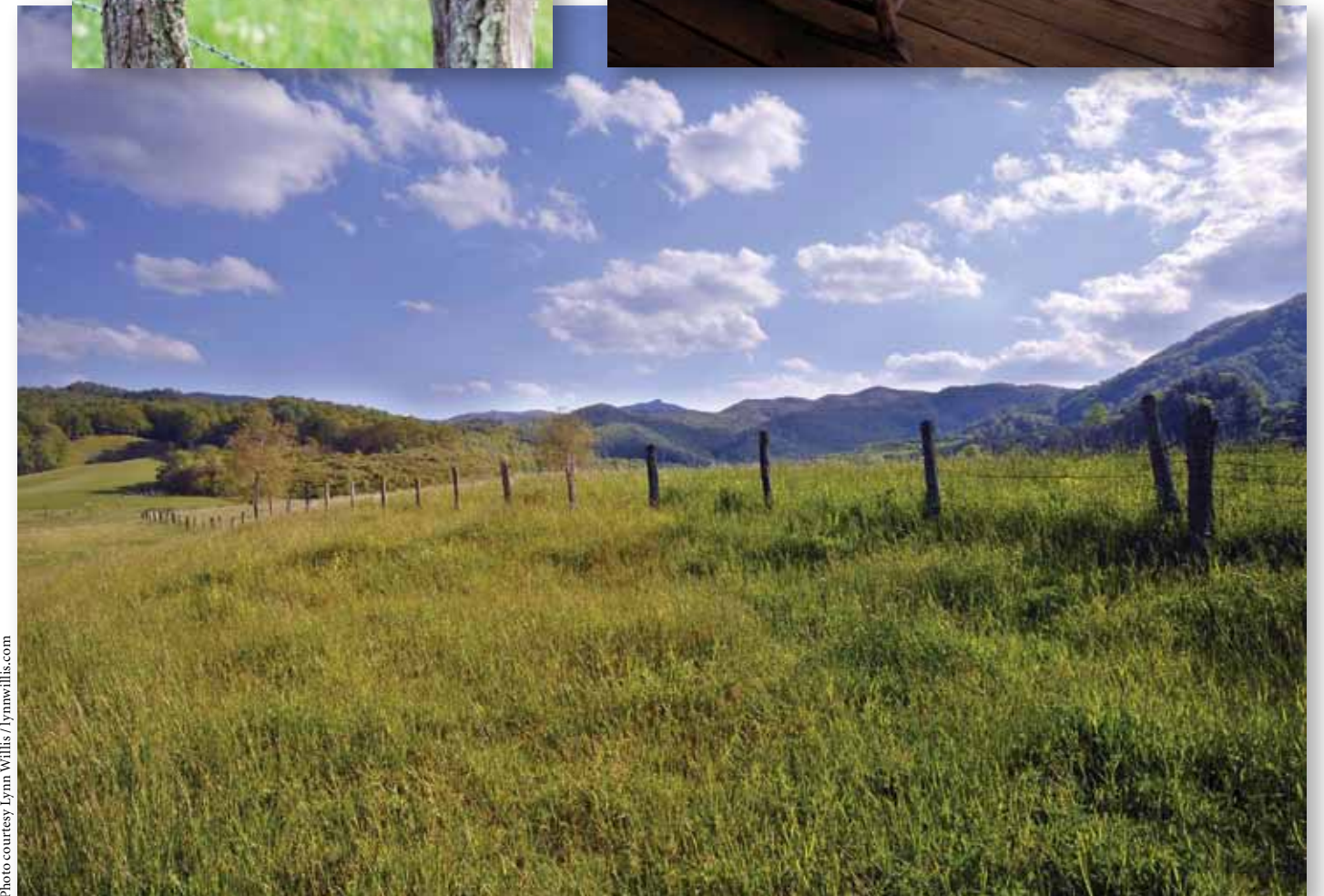


Photo courtesy Lynn Willis / lynwillis.com



Protecting and Creating Recreational Opportunities

YMCA Camp Harrison

Wilkes County, 712 acres

Thanks to a BRC conservation easement protecting 712 acres in the Brushy Mountains, children from across North Carolina can continue to renew their connection with the outdoors at Camp Harrison, a YMCA summer camp. With no state parks, game lands or other large protected tracts in the Brushies, this property constitutes the largest area of protected land in the Brushy Mountains.



Elk Knob State Park

Ashe and Watauga Counties, 530 acres

By helping expand Elk Knob State Park, BRC has assisted North Carolina in creating additional recreational opportunities while protecting the region's important natural resources. Part of the amphibolite mountain group, an unusual mountain chain containing a calcium-rich rock rare in the southern Blue Ridge, Elk Knob and its surrounding mountain peaks support an enormous variety of rare plant and animal life. The New River, an American Heritage River and one of the oldest rivers in the world, also originates on Elk Knob.

Three Top Mountain Game Lands

Ashe County, 108 acres

Named for its three prominent rock outcroppings, Three Top Mountain supports a variety of recreational opportunities, as well as a rich ecology and abundant wildlife. Hunters can take advantage of a nearly 3,000-acre game land, hikers will find rugged trails and hidden waterfalls, and in the spring birders can enjoy nesting songbirds like the rose-breasted grosbeak. BRC helped expand the game land and assisted the state in adding a new recreational access area.



Valle Crucis Community Park

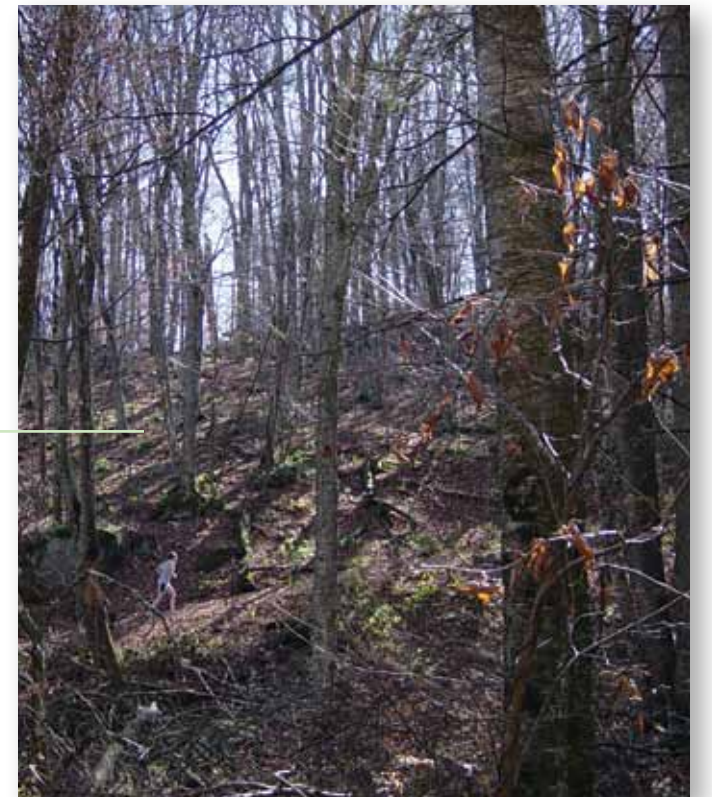
Watauga County

Bordering the Watauga River behind Mast General Store, Valle Crucis Community Park is an immensely popular community resource. To protect open space, as well as the Watauga River's water quality, BRC accepted a donated conservation easement on the park's riparian corridor.

J. Douglas Williams Park

Sugar Mountain, Avery County, 14 acres

The J. Douglas Williams Park on Sugar Mountain is the result of an inspired grassroots fundraising effort on the part of the Sugar Mountain Community Association. The conservation easement on this public park provides environmental and scenic protection for forests, wildlife habitat as well as recreational and educational opportunities. The park includes a picnic and restroom facility, as well as three nature trails.



Protecting the Mountain Landscape

Blue Ridge Parkway, Raven Rock Overlook

Watauga County, 12 acres

It is said that Raven Rock Overlook on the Blue Ridge Parkway provides one of the best sunset viewing spots in the region. Looking west, one can enjoy the sunset and views of other BRC conservation lands on Watauga County's higher peaks. BRC worked with a local landowner to protect the family farm below Raven Rock, bordering the Blue Ridge Parkway. Raven Rock's views, along with a sustainable farm, are now preserved forever.



Blue Ridge Parkway Meadow Creek and Koontz Farm, 374 acres

Celebrating its 75th anniversary in 2010, the Blue Ridge Parkway is America's most visited national park. By showcasing the natural wonder and beauty of the Blue Ridge, the Parkway contributes billions of tourism dollars to North Carolina's economy. Working with partners like the Conservation Trust for North Carolina, Blue Ridge Parkway Foundation, and others, BRC has protected thousands of acres of land along the Parkway, forever preserving the amazing views that attract millions of visitors year after year. Pictured is the Meadow Creek conservation easement in Alleghany County. This easement, along with the nearby Koontz Farm, protects 374 acres of scenic Parkway views.



Bullhead Mountain State Natural Area

Alleghany County, 229 acres

Known among birders as a prime spot for watching the hawk migration, Bullhead Mountain also forms a beautiful and significant portion of the mountain scenery along the Blue Ridge Parkway. BRC's work at Bullhead Mountain forever protects this Natural Area's scenic beauty for hikers, bird enthusiasts and Blue Ridge Parkway visitors.



Howards Knob

Watauga County, 46 acres

Since BRC's beginnings, Howards Knob has inspired important community conservation efforts. Thanks to a BRC conservation easement, a major portion of Howards Knob's southern slope is protected from development forever. This 46-acre natural area permanently protects headwater streams, plant and animal life, as well as a significant piece of scenic beauty for the town of Boone.

Mission Crossing Byway, NC Highway 194

Avery and Watauga Counties, 123 acres

The N.C. Department of Transportation created Scenic Byways to highlight the beauty of the Tarheel state, and to raise awareness for the preservation of its special places. In BRC's seven county region, there are five Scenic Byways, including Mission Crossing. This byway includes Highway 194 from Avery County along the Elk River, through Banner Elk and Valle Crucis ending in Vilas. On Mission Crossing's western end, two BRC projects protect 123 acres of farms and fields, forests and streams, and the Byway's scenic beauty, forever. Pictured is the Oliver Hill easement.

